

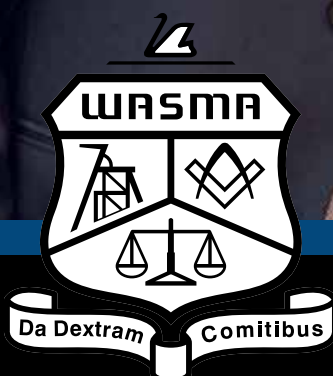
W A S M A L U M N I review

WA SCHOOL OF MINES ALUMNI MAGAZINE

EVENT
PHOTO GALLERY

SANDVIK
BREAKS GROUND
ON NEW PERTH
WORKSHOP

CURTIN AND UQ
COLLABORATE WITH
INDUSTRY ON NEW
ONLINE MINING COURSE



SUMMER 2020 | V10

CONTENTS



A VERY BIG THANK YOU.....	3
PRESIDENT'S MESSAGE.....	4
SANDVIK BREAKS GROUND ON NEW PERTH WORKSHOP	6
PROFILE: ODWYN JONES	8
KEEPING IN TOUCH.....	9
EVENT GALLERY	
MENTORING PROGRAM WRAP UP.....	10
WIMWA & WASMA DIGGERS SUNDOWNER.....	12
WASMA GALA.....	14
CURTIN AND UQ COLLABORATE WITH INDUSTRY ON NEW ONLINE MINING COURSE.....	7

Cover image: WASMA Mentoring Program mentor Warwick Jones with mentee Patrick Liddle

Magazine Content by Liz Blaxell | admin@wasma.com.au

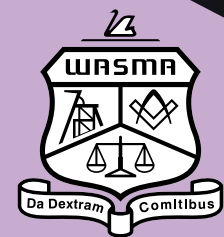
Magazine Design by Shannon Jones | shannonjonesdesign@bigpond.com



A VERY BIG THANK YOU

TO ALL OF THE 2020
WASMA GALA SPONSORS





EVENTS CALENDAR NEW YEAR 2021

**WASMA GRADUATES LUNCHEON
19 FEBRUARY**

We also look forward to honouring our class of 1996 at this event as they celebrate their 25-year anniversary.

Please update your contact details to receive an invitation by emailing admin@wasma.com.au and forward the details to other graduates from this cohort.

**WASMA FAMILY DAY
14 MARCH
DETAILS TO COME**

**MINING, INNOVATION AND
COLLABORATION
17 MARCH
DETAILS TO COME**



As this challenging year comes to an end, I hope you can reflect on the success stories that have emerged at both a personal and professional level. The WASM Alumni is extremely proud that so many of its members have been integral to supporting our country, particularly through jobs and financial means during one of the most difficult times in recent history.

Fortunately in Western Australia, we have been able to operate relatively freely for the latter part of the year, enabling many WASMA events to go ahead.

We recently held the WASMA Annual Gala, which was a great celebration of our community. Thank you to everyone who supported our extremely successful fundraising effort with funds supporting students through the WASM Endowment Fund and activities on the Kalgoorlie campus.

Thank you also to our sponsors who made the event possible: AMPS, Bardoc Gold, Entech, IGO, Macmahon, Wilshaw, Mine Survey Plus, Deswick, Ramelius Resources, Sandvik, Saracen, Northern Star and Curtin University.

In the coming year we look forward to connecting with more members as well as welcoming graduates into the Alumni. The WASMA Graduates Luncheon will be held in Perth in February with the WASMA Graduates Dinner in Kalgoorlie later in the year.

All things going well, our full events program will run in 2021 including the Mining, Innovation and Collaboration series featuring speakers from across the resources industry.

New Head of WASM:MECE Professor Michael Hitch was recently appointed and is due to take up the role early in 2021. A very big thank you to outgoing Head of School Professor Vishnu Pareek for your contribution, we look forward to continuing to work with you.

WASM:MECE has had several other significant achievements this year including recently receiving reaccreditation for its BEng (Hons) program. All of the School's BEng (Hons) programs are accredited by Engineers Australia, which enables the programs to meet the requirements of the Washington Accord that instantly permits qualifications of our graduates to be recognised in many countries including the UK and US.

The School also successfully received accreditation of its new Master of Professional Engineering programs allowing it to offer accredited programs at Masters level for the first time. The School currently offers MProEng for five different majors: Chemical Engineering, Metallurgical Engineering, Mining Engineering, Petroleum Engineering and Subsea Engineering.

This year, the School began rolling out the revised Mining Engineering BEng (Hons) program. The key features of the revised program include greater focus on data analytics, automation and artificial intelligence. The program also has work integrated learning cohesively integrated with teaching and learning activities.

Late last year, the School integrated its Metallurgical and Chemical Engineering programs to make the programs more sustainable. In 2021, other than Mining Engineering, all programs will undergo a major revision. External stakeholders including industry and alumni will play a pivotal role in the process.

As always, I invite our members to get involved with the Alumni as it is our people who create our thriving community.

I wish you all a happy and restful Festive Season ■

Best wishes
CHRISTIAN PRICE
WASM Alumni President

VALE BARRY PATTERSON

It is with great sadness that we acknowledge the life of esteemed WA School of Mines Alumni member Barry Patterson who recently passed away.

Barry had a long and distinguished career in the resources industry while maintaining strong connections to WASM and the Alumni.

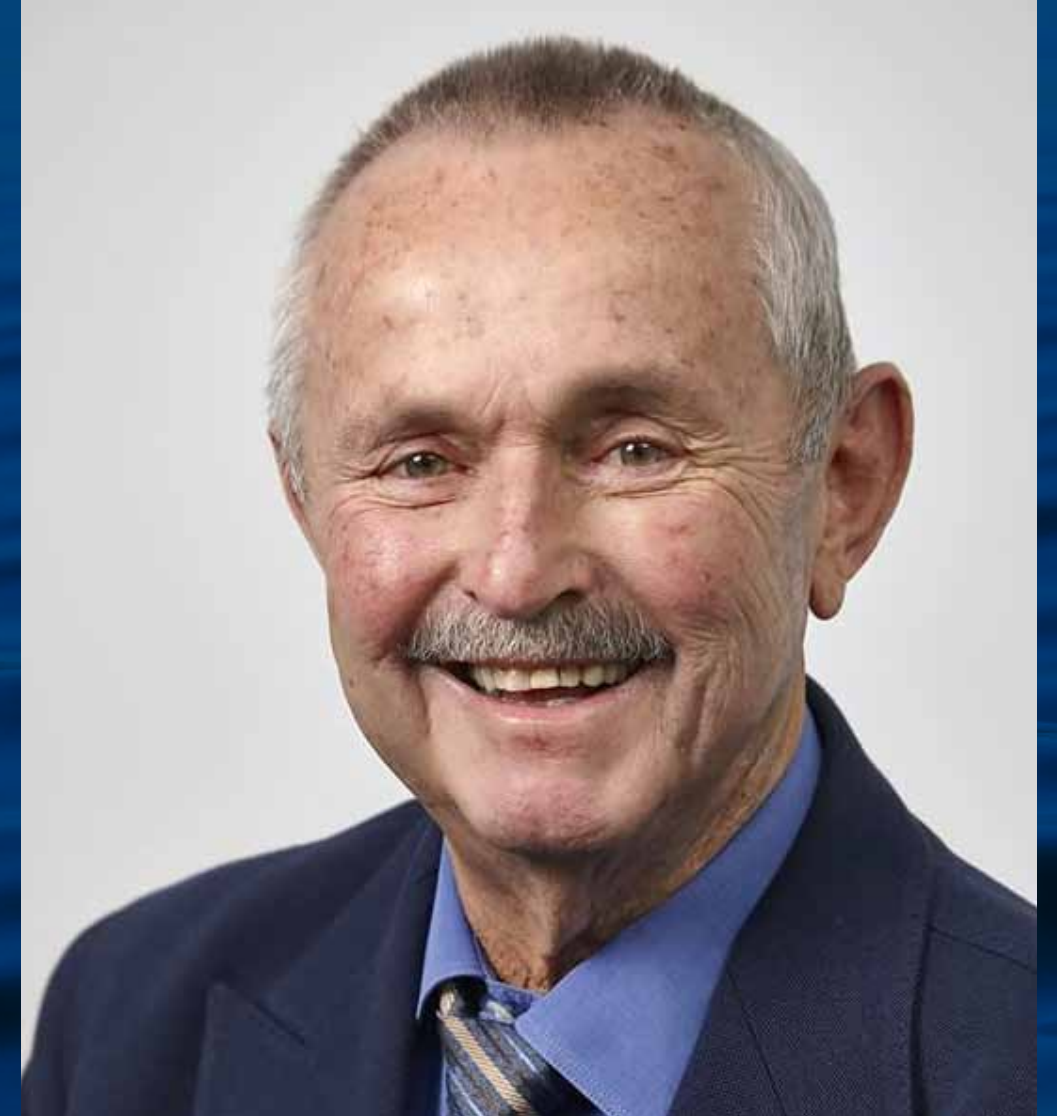
Along with fellow WASM graduates, Barry established world-renowned contract mining services organisation Eltin Ltd. He also co-founded Australian Mine Management, National Mine Management and JR Engineering Services and spent 20 years working for WMC Resources.

Barry offered mentoring and career opportunities to numerous WASM students and graduates as well as financial contributions to the school. Together with the other Eltin founders, Barry helped to arrange funds for the WASM Student Guild Building.

In 2019, Barry was presented with the WASMA High Achiever Award in recognition of his outstanding contribution to the Alumni and the broader resources industry.

Many WASM graduates are extremely grateful to Barry for getting their start in the resources industry.

WASMA extends its condolences to Glenice, Keli, Donna, Kristy, Nikki and family.





SANDVIK BREAKS GROUND ON NEW PERTH WORKSHOP

*Sandvik breaks ground on new Perth workshop at Roe Highway Logistics Park
LHS – RHS - Andrew Dawson (Sandvik, Business Line Manager, Load & Haul), Ben Lisle (Hesperia,
Managing Director), Debora Paula (Sandvik, Applications Engineer APAC), Brett Kervin (Sandvik,
Operations Manager Service - North & South) and Judd Dyer (Hesperia, Director)*

Sandvik Mining and Rock Technology has signed a long-term lease for a new purpose-built workshop in Perth. Construction is underway with the workshop scheduled for completion in 2021.

Located at Roe Highway Logistics Park (Kenwick, Perth), the 16,000 square metre site will include a state-of-the-art workshop, modern office, meeting facilities, as well as testing and training equipment.

AN EVEN STRONGER OFFERING

According to Sandvik Business Line Manager – Service in APAC Nathan Cunningham, Roe Highway represents a strategically important location to be able to better support Sandvik's Australian customers.

"The strategic location of our new workshop, with its central position, freight rail and RAV7 truck access will enable us to further support our Western Australian customers and the purpose-build design will improve equipment repairs, inspections and our rebuild capability for our equipment offering," Mr Cunningham said.

"The improved layout, increased size, additional bays and design will enable our fully-trained service technicians, aftermarket support and technology specialists the ability to work more efficiently," he said.

"To continue to support our customers, we need to continue to invest in facilities that will not only support our existing markets, but will also have the capacity and capability to support the growing demand for future products, such as our electric load and haul offering."

"The high quality of our rebuilds allows us to provide full warranties on the machines we strip down and rebuild."

The new workshop will be fully accredited and work to OEM standards.

IN LINE WITH SANDVIK SUSTAINABILITY GOALS

Sandvik Sustainability, Marketing and Communications Manager in APAC Kate Bills said that the purpose-built facility had been designed to align with Sandvik's 2030 Sustainable Business goals, which address a circular society, climate change, safety and fair play.

"At Sandvik, we want to ensure that sustainability is integrated into everything we do. This includes reducing our CO2 footprint, minimising waste in our production process and providing the highest safety standards for our employees," Ms Bills said.

"As part of Sandvik's sustainability goals, we're aiming to halve our CO2 footprint by 2030, so the new workshop incorporates state-of-the-art design elements to help us achieve this such as solar panels, green concrete and the use of low carbon building materials," she said.

The site will also include best-practice water management, energy efficient lighting, natural ventilation and rainwater harvesting. ■

ODWYN JONES

Odwyn Jones was Principal of the WA School of Mines at Kalgoorlie for 15 years and was one of its most passionate advocates.



Odwyn has continued his long association with the resources industry since retiring. Here he shares an update on his most recent activities.

Having left school to become a coal-mining trainee with the National Coal Board in 1950, my life has taken me to many fascinating and distant places, but none more pleasurable and challenging as my 15 years at WASM in Kalgoorlie-Boulder. To me the unique mining environment surrounding WASM was mainly responsible for its international reputation of producing world class mining professionals.

Amongst many other features they had the humility to realise that a successful mining operation is dependent on the combined efforts of everyone employed, where everyone is listened to and treated with equal dignity - a winning formula that all institutions should aspire to.

In recent years my friends and personal inclinations have led me to pursue two industry-related goals:

- To assist in encouraging Indigenous students to consider pursuing mining-related careers, and
- To do what little I can, as an old has-been, to contribute to the development of safer and healthier working conditions for miners.

Some six or seven years ago I bumped into a former WASM student, Keith Ross of Ross Mining, who told me of his ambition to help encourage Indigenous High School students to continue their further education, with special emphasis on mining careers. I thought this was both a laudable and worthwhile objective, especially since I couldn't recall a single Indigenous student enrolling in any of our programs at the School during my tenure.

Consequently, I agreed to work with him, which in turn led us to establish partnerships with Clontarf Foundation, Curtin University, WASM:MECE and a range of mining companies. Over the past five years, some 40 or so boys from Clontarf Foundation Academies have participated in the one-week "Mining and the Land" WASM-based program in the Eastern Goldfields.

This year we're hoping to establish a Perth-based inaugural program for Indigenous girls from the Australian Independent Schools, WA-based "Future Footprints" program, involving mine-site visits to Alcoa's Huntly mine and Kwinana Refinery as well as Talison Lithium's operations at Greenbushes.

This course is being organised in conjunction with Curtin University's STEM Outreach Centre and will be administered by its Manager, Andrew Hannah. Both these programs for Indigenous students are largely industry sponsored, with the largest and most generous, AngloGold Ashanti, being worthy of special mention, having invested heavily in the Clontarf Foundation boys program as well as meeting 80 per cent of the predicted total cost of the Indigenous girls program.

Another former student of WASM, Andrew Chaplyn, is the Department of Mines, Industry Regulations and Safety's (DMIRS), State Mining Engineer and Director Mine Safety, who along with his predecessor Simon Ridge (yet another WASM graduate) established and chaired a working group to investigate and report to the Minerals Industry Advisory Committee (MIAC) on the health hazards to miners, exposed on a regular basis, to diesel engine exhaust fumes, and in particular, its "nano-Diesel Particulate Matter" component.

I was a member of this working group along with industry and trade union representatives and some eminent researchers, such as UWA's Clinical Professor Bill Musk AM, a Respiratory Physician and researcher of national and international repute, the ChemCentre's Dr Silvia Black, and Curtin University's Associate Professor in Epidemiology and Biostatistics, Alison Reid, and Associate Professor Ben Mullins, Director – Occupation, Environment and Safety, both from the School of Public Health. The work of this group led to a MRIWA/DMIRS sponsored research program at AngloGold Ashanti's Sunrise Dam underground gold mine, and we are currently in the process of considering the working group's draft "Close-up Report".

As you can see, a great deal of my recent activities have resulted in renewing my association with old WASM colleagues and friends, which has reinforced my firm conviction that the experiential education and training programs at WASM provide the best template for producing world class, job-ready, mining-related graduates and postgraduates, thereby ensuring the continued wellbeing and success of our domestic and international mining sectors.

KEEPING IN TOUCH



DECEMBER





MENTORING PROGRAM WRAP UP



OCTOBER

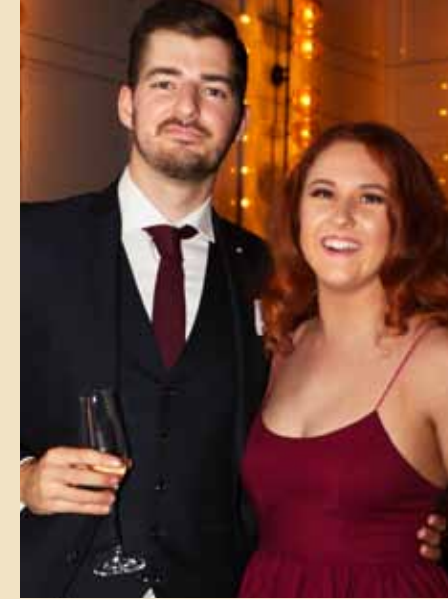


WIMWA & WASMA DIGGERS SUNDOWNER





WASMA GALA



CURTIN AND UQ COLLABORATE WITH INDUSTRY ON NEW ONLINE MINING COURSE

Photo by Sergey Zaklin on Unsplash

Curtin University and The University of Queensland (UQ) have developed a new Professional Certificate Program that will increase understanding of the modern mining industry in Australia and open pathways to postgraduate study for people currently working within the industry.

The Foundations of Modern Mining Program is sponsored by the Minerals Council of Australia (MCA) and consists of six courses available globally via the edX platform.

Dean of Learning and Teaching for Curtin's Faculty of Science and Engineering Associate Professor Chris Rawson said the new Program would help learners upskill within their current industry role and improve their understanding of the minerals and mining sector.

"The mining industry within Australia is constantly evolving and it is important to keep track of emerging technologies and modern techniques that are being used by mining companies and affiliated professions," Associate Professor Rawson said.

"This new program will give participants a better understanding of key aspects of modern mining including the business of mining, mining operations, the digital transformation of mining, sustainability, leadership and diversity, and health, safety and wellness," he said.

SMI's Director Professor Neville Plint said he was delighted SMI was partnering with Curtin University on this important initiative, taking advantage of the complementary expertise across the two institutions.

"The education landscape is changing rapidly, and this new Professional Certificate is an excellent example of a more flexible approach," Professor Plint said.

"It provides pathways to allow people to upskill to meet new demands for the mining workforce in a rapidly changing context."

MCA Chief Executive Tania Constable, said providing flexible, high quality education and training was crucial to building the minerals workforce of the future.

"Support for this certificate course is part of a long-term substantial investment by MCA member companies to ensure the quality supply of Australian graduates for the mining industry," Ms Constable said.

"Effective, collaborative partnerships across industry, universities, government and the community are essential to reinvigorate learning pathways, student experiences and outcomes to attract and engage diverse talent," she said.

Senior staff from Curtin University's Western Australian School of Mines and UQ's Sustainable Minerals Institute and the School of Business will teach the six courses within the program.

Completion of the Professional Certificate will provide an entry pathway into Postgraduate Certificate courses at both universities.

For more information visit:
www.edx.org/professional-certificate/uqx-curtinx-foundations-of-modern-mining



Each of our sponsors plays an integral part in helping the WASMA community to thrive.
THANK YOU FOR YOUR SUPPORT.

PLEASE EMAIL ADMIN@WASMA.COM.AU
FOR SPONSORSHIP ENQUIRIES



Merry Christmas

Wishing all members of the
WA School of Mines Alumni community
a safe and happy Festive Season.
We look forward to seeing you in 2021.



Photo by freestocks on Unsplash